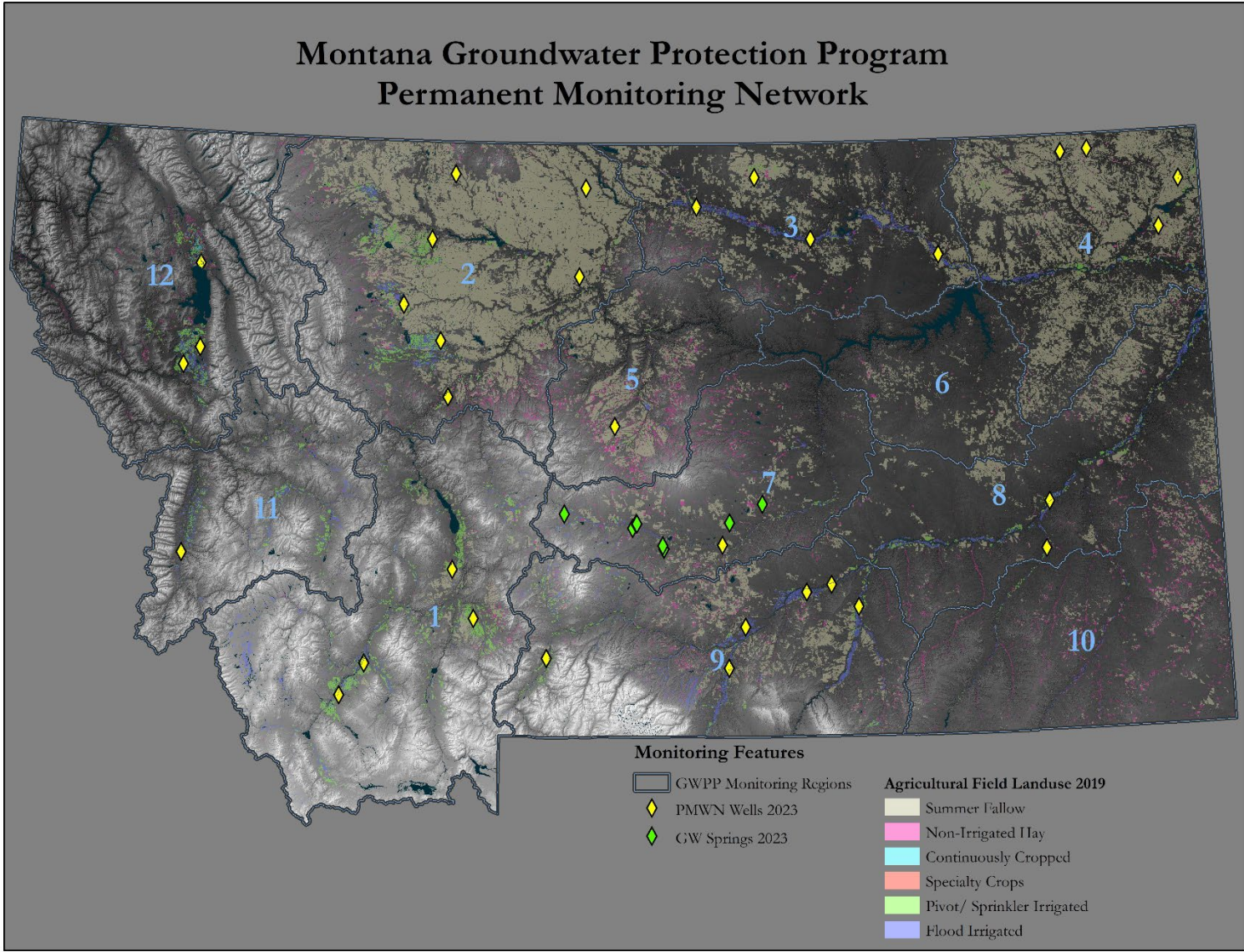


Groundwater Protection Program



Brett Heitshusen
Sustainable Agriculture Section
Supervisor
(406) 444-3271
bheitshusen@mt.gov



The Montana Department of Agriculture provides no warranty expressed or implied as to the accuracy, reliability, or completeness of furnished data. Some of the datasets in this map document may contain References (or pointers) to information created and maintained by outside organizations. Please note, the Montana Department of Agriculture does not control and cannot guarantee the relevance, timeliness, or accuracy of these outside materials.

During the 2023 sampling season, the Groundwater Protection Program (GWPP) collected water samples from 28 permanent groundwater monitoring wells and 5 Montana Salinity Control Association groundwater monitoring wells and 9 groundwater springs. In total, 97 samples were collected and analyzed for up to 108 pesticides and pesticide metabolites each. Results are summarized in the following tables by region. Of the 262 detected chemicals, representing 14 varieties of pesticides, no detections exceeded the respective drinking water standard, or the action threshold of 50% of the respective drinking water standard. All detected pesticide concentrations were < 3.75 % of their respective drinking water standard.

Region 1

Analyte	Number of Detections	Average Detected Concentration (ppb)	Drinking Water Standard (ppb)	Pesticide Class
Bentazon	1	0.006	210	Benzothiadiazole
Imazamethabenz	3	0.006	1,700 (sum parent + metabolite)	Imidazolinone
Imazamox	1	0.010	21,000	Imidazolinone
Imazapyr	1	0.004	17,000	Imidazolinone
Prometon	1	0.008	100	Triazine

Region 2

Analyte	Number of Detections	Average Detected Concentration (ppb)	Drinking Water Standard (ppb)	Pesticide Class
Aminopyralid	1	0.036	3,000	Pyridine carboxylic acid
Bromoxynil	2	0.050	3.2	Nitrile
Imazamethabenz	5	0.004	1,700 (sum parent + metabolite)	Imidazolinone
Imazamox	3	0.271	21,000	Imidazolinone
Imidacloprid	4	0.014	380	Neonicotinoids
Pinoxaden	4	0.057	2,000 (sum parent + metabolite)	Phenylpyrazolin
Prometon	1	0.002	100	Triazine
Pyrasulfotole	2	0.255	70	Pyrazole

Region 3

Analyte	Number of Detections	Average Detected Concentration (ppb)	Drinking Water Standard (ppb)	Pesticide Class
Atrazine	1	0.015	3 (sum parent + metabolite)	Triazine
Prometon	1	0.008	100	Triazine

Region 4

Analyte	Number of Detections	Average Detected Concentration (ppb)	Drinking Water Standard (ppb)	Pesticide Class
Alachlor	1	0.013	2	Chloroacetamide
Aminopyralid	3	0.037	3,000	Pyridine carboxylic acid
Flucarbazone	7	0.020	3,000 (sum parent + metabolite)	Sulfonylaminocarbonyltriazolinone
Imazethapyr	3	0.005	17,000	Imidazolinone
Pinoxaden	1	0.006	2,000 (sum parent + metabolite)	Phenylpyrazolin

Region 5

Analyte	Number of Detections	Average Detected Concentration (ppb)	Drinking Water Standard (ppb)	Pesticide Class
Flucarbazone	3	0.005	3,000 (sum parent + metabolite)	Sulfonylaminocarbonyltriazolinone
Imazamethabenz	4	0.010	1,700 (sum parent + metabolite)	
Pinoxaden	4	0.135	2,000 (sum parent + metabolite)	Phenylpyrazolin
Pyrasulfotole	4	0.112	70	Pyrazole
Pyroxsulam	2	0.021	7,000	Triazolopyrimidine

Region 7

Analyte	Number of Detections	Average Detected Concentration (ppb)	Drinking Water Standard (ppb)	Pesticide Class
Metsulfuron methyl	2	0.017	2,000	Sulfonylurea
Prometon	1	0.001	100	Triazine

Region 8

Analyte	Number of Detections	Average Detected Concentration (ppb)	Drinking Water Standard (ppb)	Pesticide Class
2,4-D	2	0.018	70	Phenoxy-carboxylic acids
Alachlor	6	0.039	2	Chloroacetamide
Bentazon	3	0.004	210	Benzothiadiazole
Bromacil	3	0.007	700	Uracil
Metolachlor	6	0.015	1,000 (sum parent + metabolite)	Chloroacetamide

Region 9

Analyte	Number of Detections	Average Detected Concentration (ppb)	Drinking Water Standard (ppb)	Pesticide Class
Acetochlor	1	0.039	100	Chloroacetamide
Atrazine	3	0.049	3 (sum parent + metabolite)	Triazine
Clothianidin	5	0.143	650	Neonicotinoids
Metolachlor	5	0.068	1,000 (sum parent + metabolite)	Chloroacetamide
Pinoxaden	8	0.008	2,000 (sum parent + metabolite)	Phenylpyrazolin
Prometon	7	0.001	100	Triazine
Pyrasulfotole	5	0.227	70	Pyrazole

Region 11

Analyte	Number of Detections	Average Detected Concentration (ppb)	Drinking Water Standard (ppb)	Pesticide Class
Imazapic	1	0.007	3,000	Imidazolinone

Region 12

Analyte	Number of Detections	Average Detected Concentration (ppb)	Drinking Water Standard (ppb)	Pesticide Class
Aminopyralid	6	0.162	3,000	Pyridine carboxylic acid
Bentazon	2	0.004	210	Benzothiadiazole
Imazapyr	7	0.012	17,000	Imidazolinone
Imidacloprid	2	0.002	380	Neonicotinoids
Metolachlor	7	0.780	1,000 (sum parent + metabolite)	Chloroacetamide
Metsulfuron methyl	7	0.035	2,000	Sulfonylurea

Analyte Glossary

2,4-D:

2,4-D is a selective systemic herbicide with a wide variety of uses, which include ornamental lawns and turf, right-of-ways, range and pasture, forest management areas, and several crops including corn and small grains. 2,4-DB, 2,4-DP, MCPA, and MCPP are variants of 2,4-D. It is highly soluble in water, non-volatile and has a low potential to leach to groundwater based on its chemical properties. It is non-persistent in soil but may persist in aquatic systems under certain conditions.

Acetochlor:

Acetochlor is a chloroacetanilide type herbicide with restricted usage for preemergent control of grasses and broadleaf weeds on agricultural crop land. Acetochlor is labeled for use in cabbage, citrus, coffee, corn, green peas, maize, onions, orchards, soybeans, sugarbeets, sunflower, and vineyards. The use of this chemical in areas where soils are permeable, particularly where the ground water is shallow, may result in ground water contamination. Acetochlor has properties that may result in surface water contamination via dissolved runoff and runoff erosion.

Alachlor:

Alachlor is a selective systemic herbicide absorbed by germinating plant shoots. Alachlor is labeled for crop use in beans, corn, and sorghum. It can be applied via soil or water treatment, or aerial application. Alachlor tends to break down easily in the environment and is somewhat mobile; however, Alachlor ESA (ethane sulfonic acid) and OA (oxanilic acid) are stable metabolites which easily leach through soils.

Aminopyralid:

Aminopyralid is applied to wheat, hay, and pastures to control broadleaf noxious weeds. It is a persistent herbicide and does not break down readily in the environment, and can stay active even in manure, mulch, or compost. It is non-volatile, highly soluble in water and, based on its chemical properties, is mobile and has a high potential for leaching to groundwater. It may be moderately persistent in soil systems but would not be expected to be persistent in surface water under normal conditions.

Atrazine:

Atrazine is a restricted use selective systemic herbicide that is used on sorghum and corn in foliar and soil applications. It can also be used in some ornamental turf applications and has previously been labeled for use on roadsides. Atrazine and its degradants tend to be persistent in the environment and have moderate to high leachability in soils.

Bentazon:

Bentazon is a contact herbicide that is used for post-emergence control of annual weeds in several crops and can also be used in non-crop areas. Crop sites include beans, peas, sorghum, and corn, and non-crop sites include ornamentals and turf, rights-of-way, and roadsides. Bentazon is stable in water but tends to break down in soils. It is highly soluble in water and moderately mobile in soils.

Bromacil:

Bromacil is a nonselective uracil herbicide absorbed mainly through plant roots. It is labeled for use in non-crop areas including rights-of-way, industrial sites, parking areas, fencerows, and railroads. Bromacil is mobile in soils, highly leachable, and persistent in the environment.

Bromoxynil:

Bromoxynil is an herbicide for post-emergence control of broadleaf annual weeds. It is registered for crops including wheat, barley, oats, rye, and flax. Bromoxynil is only moderately soluble with low leachability, but it is very persistent in water.

Analyte Glossary

Clothianidin:

Clothianidin is an insecticide used to control sucking and chewing pests. It is registered for use in corn, potatoes, canola, and small grains and may be applied via seed treatment. Clothianidin is also registered for use in some indoor products, some products for use on specific vegetables and fruits, and in some products for use on turf and ornamentals. It is moderately soluble and can accumulate in both soil and water.

Flucarbazone:

Flucarbazone is an herbicide that is absorbed through roots and foliage and can be translocated in plants. Flucarbazone is labeled predominantly for use in wheat but can also be used in ornamental turf and some specific grasses. It is highly soluble and very leachable in soils. It is not persistent in soil, but it can be very persistent in water.

Imazamethabenz:

Imazamethabenz is a selective, systemic herbicide labeled for use in wheat, barley, and sunflowers. It is highly soluble in water, leachable in soil, and tends to be persistent in both soil and water.

Imazamox:

Imazamox is a post-emergence herbicide used to control broadleaved plants. It is a contact herbicide with residual activity. Imazamox is labeled for use in some crops including small grains, lentils, sunflowers, canola, and alfalfa, and for non-crop applications including rights-of-way, industrial areas, and some aquatic environments. It is highly soluble and leachable and tends to be persistent in most soil and water environments.

Imazapic:

Imazapic is a selective and systemic herbicide with both contact and residual activity. It is generally used to target annual and perennial grasses and some broadleaf weeds. Imazapic is labeled for use in limited agricultural sites and several non-crop areas such as range and pasture, petroleum tank farms, fence rows, ornamental planting areas, right-of-way, and roadsides. Imazapic is highly water soluble, leachable in soils, but not likely to remain stable in soils.

Imazapyr:

Imazapyr is a non-selective herbicide that is absorbed through foliage and readily translocated in plants. It is registered for use in a variety of non-crop application sites including right-of-way, range and pasture, paved areas, roadsides, fencerows, petroleum tank farms, some conifer forest sites, and some water treatment for limited vegetation. Imazapyr is likely to degrade moderately fast in soils, but can be persistent in water and is very water-soluble. The concentration in this sample did not exceed the Montana groundwater drinking water standards for human health.

Imazethapyr:

Imazethapyr is a systemic herbicide with contact and residual activity. It is registered for use in many crop applications, including beans, peas, alfalfa, lentils, corn, and some grasses. It can be applied soil or foliar treatment at several sites. Imazethapyr is persistent in the environment, highly leachable in soils, and may be subject to particle-bound transport.

Imidacloprid:

Imidacloprid is a synthetic, neonicotinoid insecticide. It is labeled for use with foliar and soil applications and seed treatments in several crops, ornamental plants, turf, trees, and greenhouses. Imidacloprid is very soluble and leachable and tends to be stable and relatively persistent in most soil and water environments.

Analyte Glossary

Metolachlor:

Metolachlor is a selective herbicide that inhibits seed germination and mitosis. Metolachlor can be used on ornamental turf and some containerized plants, but is commonly used in crops such as corn, sorghum, and some beans and peas. Metolachlor ESA (ethane sulfonic acid) and OA (oxanilic acid) tend to be very leachable in soil and more persistent than its parent compound.

Metsulfuron methyl:

Metsulfuron methyl is a selective systemic herbicide used to control broad-leaved weeds and some annual grasses. It is registered for use in several non-crop sites such as turf, range and pasture, CRP land, rights-of-way, and fencerows. It is also registered for use in wheat, barley, triticale, sorghum, and fallow. Metsulfuron methyl is not persistent in soil, but is very persistent in water and is highly leachable.

Pinoxaden:

Pinoxaden is a post emergence herbicide for the control of several grass weed species in all varieties of spring wheat (excluding durum), winter wheat, and barley. Pinoxaden is persistent and mobile in the environment and has the potential to reach aquatic environments and organisms via sheet and channel run-off, discharged groundwater into surface waters, and spray drift from either ground or aerial spray application.

Prometon:

Prometon is a non-selective systemic herbicide absorbed by foliage and roots. It is labeled for non-crop uses only, including right-of-way, fencerows, sidewalks, playgrounds, and parking areas. Prometon is a persistent compound in the environment and can move readily in water in runoff or leach through soil.

Pyrasulfotole:

Pyrasulfotole is a selective herbicide registered for use on cereal grains and is commonly used in wheat and barley. Pyrasulfotole is more persistent in water than in soil, highly leachable in soils and very mobile in surface water runoff.

Pyroxsulam:

Pyroxsulam is a post-emergence herbicide used to control annual grass and broad-leaved weeds. It is registered for use in wheat, as well as lawns and ornamental areas. It may also be used as a soil treatment in yards and roadways. It is persistent in water, but has low leachability. It has low residual effect but some potential for building up in populations of prey species, such as insects.

Pesticide Class Glossary

Benzothiadiazole, Nitriles, Triazine, Triazolinone, Uracil, and Urea:

Benzothiadiazoles, Triazines, Triazolinones, and Uracils are a photosystem II inhibitors.

Photosynthetic Inhibitors control many broadleaf and some grass weeds. In general, these herbicides inhibit photosynthesis by binding to D1 proteins of the photosystem II complex in chloroplast thylakoid membranes. Herbicide binding at this protein blocks electron transport and stops CO₂ fixation and production of energy needed for plant growth. The death of plants, however, does not occur primarily from photosynthates depletion but rather from an indirect effect on other processes. Blocking electron transport in PSII systems promotes the formation of highly reactive molecules that initiate a chain of reactions causing lipid and protein membrane destruction that results in membrane leakage allowing cells and cell organelles to dry and rapidly disintegrate. In addition, some PSII Inhibitors affect other plant processes such as carotenoid biosynthesis and synthesis of anthocyanin, RNA, and proteins.

Injury Symptoms: Injury symptoms from soil-applied treatments will not appear until after photosynthesis begins. Susceptible broadleaf plants will exhibit interveinal or veinal-chlorosis, depending on the herbicide. Necrosis begins around the leaf margins and progresses toward the center of the leaves. Susceptible grasses will become chlorotic and necrotic beginning at the leaf tips and progressing toward the base of the leaves. Injury symptoms from foliar applications will appear as leaf burn as cell membranes are destroyed. Leaf burn symptoms generally occur most rapidly with hot and humid conditions. It is not unusual to observe symptoms from foliar applied PSII Inhibitors within 72 hours after application.

Chloroacetamide:

Chloroacetamides are long chain fatty acid inhibitors. Long Chain Fatty Acid Inhibitors are preemergent herbicides that are used to control annual grasses and some small-seeded broadleaf weeds in a variety of crops. They do not control or seriously damage emerging plants. The primary site of absorption and action of these herbicides on broadleaf species is the roots, while the primary site of absorption and action on grass species is the emerging shoot. Long Chain Fatty Acid Inhibitors are not readily translocated in the plant. Long chain fatty acid inhibitors include acetamide, chloroacetamide, oxyacetamide, and tetrazolinone herbicides that are currently thought to inhibit very long chain fatty acid (VLCFA) synthesis. These compounds typically affect susceptible weeds before emergence but do not inhibit seed germination.

Injury Symptoms: Symptoms on grass plants include failure of the shoot to emerge from the coleoptile or whorl of the plant, giving the plant a buggy-whip appearance. Susceptible grass seedlings often fail to emerge from the soil. Injury symptoms on broadleaf plants include enlarged cotyledons, restricted growth of the true leaves, dark green color, and stunting. Other symptoms on broadleaf plants include leaf crinkling, leaf red coloring, chlorosis, necrosis, and leaf distortion.

Pesticide Class Glossary

Carboxylic acids (Synthetic Auxins):

Carboxylic acids are synthetic auxins which target the TIR1 receptor. Synthetic Auxins and Auxin Transport Inhibitors are generally used for controlling broadleaf weeds in grass crops, pastures, and industry. These herbicides include some of the more effective chemicals for perennial broadleaf weed and brush control. These herbicides, also known as plant growth regulators, are readily absorbed through both roots and foliage and translocate by phloem or xylem to meristematic tissue interfering with cell formation that results in abnormal root and shoot growth. The killing action of synthetic auxins is not caused by any single factor but rather by the disruption of several growth processes in susceptible plants. It seems, however, that the primary action of these herbicides is likely to affect cell wall plasticity and nucleic acid metabolism. Synthetic auxins also affect protein synthesis, cell division and growth, and stimulate ethylene evolution, which may in some cases produce the characteristic epinastic symptoms associated with exposure to these herbicides.

The synthetic auxins include the following herbicide families: **benzoic acids, phenoxycarboxylic acids, pyridine carboxylic acids, and quinoline carboxylic acids** that act similar to that of endogenous plant auxin. Auxin Transport Inhibitors such as diflufenzopyr, however, inhibit the movement of auxinic compounds out of cells. Consequently, when combined with a synthetic auxin herbicide such as dicamba, the dicamba can move into the cells but cannot move back out of the cell, thus maintaining a greater concentration of the auxinic herbicide within the cell. Diflufenzopyr has minor herbicide activity when applied alone but enhances the activity of auxinic herbicides.

Injury Symptoms: Most auxin herbicides cause similar injury symptoms, but symptom intensity and appearance depend on the herbicide, level of exposure, growth stage, crops, and environmental conditions. In general, trees and shrubs are less sensitive than susceptible annual plants. In addition, younger plants are more susceptible to Auxin Inhibitors than mature plants. Symptoms may range from slight, at low exposure, to severe or death from high levels of exposure. Initial symptoms are twisting, leaf curling, and cupping, which may occur within hours of exposure. Leaves that are not fully expanded at the time of exposure may be stunted and distorted.

A few days after exposure, general chlorosis may develop at high exposure levels. Leaves will drop and shoot tips may die, followed by stem dieback in trees and vines. Growth may resume depending on the level of exposure. Regrowth is sometimes limited to buds on the lower part of the plants. Regrowth may exhibit severe shoot and petiole twisting, leaf cupping, stunting, curling, strapping, feathering, roughness, crinkling of the leaf surface, vein discoloration, and fingering of the leaf margins. Auxin herbicides may inhibit interveinal tissue growth making veins appear to be joined together and extended to form finger-like projections.

In trees, ornamental shrubs, and grapevines, symptoms may continue to appear until the end of the growing season. In grapevines, 2,4-D symptoms from high concentrations may continue to appear in the second year after exposure. Severely injured grapevines may not recover for two years or more.

Furthermore, high concentrations of Auxin Inhibitors may cause stem cracking or dark reddish coloring. Stem elongation of plants may be enhanced (at low concentrations) or inhibited (at high concentrations) by growth Auxin Inhibitors.

Injury from high concentrations of Auxin Inhibitors may change fruit size, shape, and appearance or cause abortion of fruits. Slight auxin herbicide symptoms, however, may have no effect on fruit maturity.

Exposure to high concentrations of auxin herbicides may also delay fruit ripening when plants are severely affected. For example, delayed maturity from exposure to high 2,4-D concentrations may exist in a grapevine for one to three years before normal ripening returns.

Pesticide Class Glossary

Imidazolinone

Sulfonyl Amino-Carbonyl-Triazolinone

Sulfonylurea, and Triazolopyrimidine:

Imidazolinones and Sulfonyl Amino-Carbonyl-Triazolinones are acetolactate synthase (ALS) or acetohydroxy acid synthase (AHAS) inhibitors. The acetolactate synthase (ALS) inhibiting herbicides, also called acetohydroxyacid synthase (AHAS), have a broad spectrum of selectivity and are used at low rates as soil-applied or postemergence treatments in many cropping systems, trees and vines, roadsides, range and pasture, turf, and vegetation management. ALS herbicides are readily absorbed by both roots and foliage and translocated in both the xylem and phloem to the site of action at the growing points. These herbicides inhibit acetolactate synthase, a key enzyme in the pathway of biosynthesis of the branched-chain amino acids isoleucine, leucine, and valine. Plant deaths result from events occurring in response to inhibition of branched-chain amino acids, but the actual sequence of phytotoxic processes is unclear.

Injury Symptoms: Injury symptoms caused by ALS Inhibitors are generally similar. However, the intensity of ALS Inhibitor symptoms varies depending on the herbicide concerned, the rate of application, and the plant species receptor involved. It is not possible, by visual observation alone, to determine what particular ALS Inhibitors may have caused plant damage. It must also be noted that many symptoms that may on first inspection appear to be related to ALS Inhibitors might in fact be symptoms resulting from other biotic or abiotic causes that are entirely unconnected to ALS exposure. In general, injury symptoms caused by ALS inhibiting herbicides are not apparent until several days after treatment. Diagnostic symptoms arising from ALS Inhibitors generally begin with chlorosis. Chlorosis associated with such ALS exposure is shiny or mottled, sometimes with discolored foliage vein. The lower sides of the leaves usually develop a purplish/reddish color. Finally, leaves may die and become necrotic. Symptoms of ALS Inhibitor injury are usually minimal on leaves that are fully expanded before exposure. Fully expanded leaves will appear wilted, crinkled, and chlorotic. Leaves that develop after treatment are chlorotic, crinkled, stunted, and distorted. Affected plants also can exhibit interveinal chlorosis, chlorotic banding on grass leaves, red leaf venation, purpling, necrotic (brown) leaf margins, and gradual death. ALS Inhibitors may stop terminal and lateral growth and cause shoot tips to die. Stems may develop a dark red color with necrotic lesions and cracks.

Growth of ALS sensitive trees, shrubs, and vines usually slows or ceases one to three weeks after exposure (this period will fluctuate depending on the maturity of the tree concerned, plant species, herbicide, rate, and environmental conditions). Where there is high ALS herbicide uptake, the meristematic tip on the stem will die followed by stem dieback. The buds below the dead parts usually grow after a period of time forming new growth that is generally stunted or distorted. After a period of time the plant will resume growth; however, such new growth will have short internodes and multiple branching. At the end of the growing season, the tree may have a "Christmas tree-like" appearance. Several of these symptoms, such as general and interveinal chlorosis, yellow spotting, necrosis, and stem dieback, may result from other causes not ALS Inhibitor damage. If ALS damage is suspected, the progression of symptoms and the study of ALS Inhibitor symptomology, in its entirety, are critical.

Pesticide Class Glossary

Neonicotinoid:

Neonicotinoids are nicotinic acetylcholine receptor (nAChR) agonists. Neonicotinoids are fairly new chemicals, but they have established themselves as key components in insecticides because of their unique selectivity. The mode of action of neonicotinoids is similar to the natural insecticide nicotine. They selectively bind and interact with the insect nicotinic acetylcholine receptor site. When neonicotinoids bind to the binding site of an insect, their electronegative tip, consisting of a nitro or cyano group, interacts with a unique cationic subsite of the insect's receptor. On the other hand, the action of protonated nicotinoids requires a cationic interaction for binding to a mammal receptor. In insects, neonicotinoids cause paralysis which leads to death, often within a few hours; however, they are much less toxic to mammals, and under the WHO/EPA classification these compounds are placed toxicity class II or class III. Because the neonicotinoids block a specific neural pathway that is more abundant in insects than in warm-blooded animals, these insecticides are selectively more toxic to insects than mammals. This target site selectivity is a major factor in the favorable toxicological properties of neonicotinoids.

Phenylpyrazolin:

Phenylpyrazolins are acetyl CoA Carboxylase (ACCase) Inhibitors. ACCase Inhibitors are primarily used for postemergence grass control in broadleaf crops. These herbicides are absorbed through the foliage and translocated in the phloem to the growing point, where they inhibit meristematic activity. ACCase Inhibitors include herbicides belonging to Aryloxyphenoxypropionate (FOPs), cyclohexanedione (DIMs), and phenylpyrazolin (DENs) chemistries. These herbicides inhibit the enzyme acetyl-CoA carboxylase (ACCase), which catalyzes the first step in fatty acid synthesis and is important for membrane synthesis.

In general, broadleaf species are naturally resistant to FOPs, DIMs, and DENs herbicides because of a less sensitive ACCase enzyme. However, ACCase inhibiting herbicides may cause symptoms on certain broadleaf crops. Natural tolerance of some grasses is due to a less sensitive ACCase enzyme or a higher rate of metabolic degradation.

Injury Symptoms: Symptoms on sensitive plants may vary depending on the crop, rate of exposure, and growth stage. Injury symptoms caused by the ACCase Inhibitors appear several days after treatment. Symptoms include chlorosis (yellowing) of newly formed leaves with possible reddening or purpling of older leaves. Tissues at the growing point turn brown and eventually decompose (rotten growing point), a symptom called deadheart. These herbicides may cause general chlorosis and necrosis (white to shiny appearance). Lower exposure rates may cause interveinal bleaching (white) or chlorosis. In corn and sorghum, bleaching is more intense on whorl leaf. In broadleaf plants, symptoms include chlorosis, mottled chlorosis, necrotic spots, leaf crinkling, and leaf distortion.

Pesticide Class Glossary

Pyrazole:

Pyrazoles are a carotenoid biosynthesis inhibitors, targeting the 4-hydroxyphenyl-pyruvate-dioxygenase (HPPD) pathway. These herbicides applied as preemergence or postemergence in different cropping systems, landscape and ornamental, industrial use, and aquatic setting. In general, they are active on broadleaf weeds but control selected grasses. The Carotenoid Biosynthesis Inhibiting herbicides interfere directly or indirectly with carotenoid production that protects chlorophyll from excessive light and photo oxidation. Ultimately, chlorophyll production is inhibited, and plant foliage turns white and appears bleached. Although injury symptoms are similar with these herbicides; the specific site of action is different. Callistemones, isoxazoles, and triketones are examples of herbicides that inhibit 4-hydroxyphenyl pyruvate dioxygenase (HPPD). This enzyme catalyzes a key step in plastoquinone biosynthesis and its inhibition gives rise to bleaching symptoms. These symptoms result from an indirect inhibition of carotenoid synthesis due to the involvement of plastoquinone as a cofactor of phytylene desaturase.

Injury Symptoms: Injury symptoms from the carotenoid biosynthesis herbicides are expressed as white to translucent foliage. Plant foliage appears bleached and sometimes with purpling of the leaf margins. In trees and woody ornamentals, symptoms may appear as veinal chlorosis or bleaching. In carotenoid biosynthesis herbicide drift cases bleaching and slight chlorosis may develop within 72 hours of exposure depending on rates and plant species, followed by necrosis in the most severe cases. Leaves that develop after exposure may be crinkled and distorted. Three to four weeks after exposure, plants may recover and appear normal.

More information on pesticides' mode of action, like that provided in this document, can be found at the University of California's Herbicide Symptoms web page: <https://herbicidesymptoms.ipm.ucanr.edu/>